



**Color Soft™ Trenza**

Soft Flow Fabric Dyeing Machine



**EXOLLOYS**  
ENGINEERING PVT. LTD.  
(An ISO 9001:2008 Company)

## Ecofriendly

The new **ColorSoft™ Trenza** dyeing machines are designed keeping ecosystem in view.

The machine uses less resources like water, steam, chemicals and dye stuff.

The effluent discharged is reduced significantly and therefore a friend to the nature.

## Economy

The **ColorSoft™ Trenza** range of dyeing machines offers problem-free operations under the most grueling conditions.

The special in-built features make these machines ideally suited for demanding industrial conditions.

They are economical in their use of water, steam, chemicals, dyestuff, and process times.

## Performance

Knitting excellence into your fabric

Like the fibre in the fabric, quality is Knitted into every **ColorSoft™ Trenza** Dyeing machine. It is this quality that makes **ColorSoft™ Trenza** best suited for any fabric dye house.

The most gentle dyeing conditions produce the highest quality fabric. The lowest nozzle pressures, gentle process speeds coupled with tensionless and tangle-free fabric movement, produce outstanding fabric quality, free of pilling, creasing, rope marks and minimum fibre loss '**ColorSoft™ Trenza**' Dyeing machine is suitable for cotton, synthetic and blended fabric such as polyester, polyamide, lyocell, cupro, polynosic, micro fibre, tencel, linen etc. and blend of all these synthetic fabrics with cotton or with viscose.

The biggest advantage of this systems is to have very good levelness of dyed material and short dyeing process time without crease mark.

'ColorSoft™ Trenza' ensures saving in chemicals, dyestuff, water, energy, processing time as compared to other conventional machines.

The machine is particularly suitable for gentle and careful treatment of fabrics having a sensitive structure.



The **ColorSoft™ Trenza** small batch machine bridges the gap between research, laboratory and production.

Due to its high versatility, it is used in the research for quality assurance, in the laboratory for testing new processes and for running sample batches, and in production to manufacture very small batches.

The similar level of chemicals and water utilization, enables the use of results for normal production.

The compact nature of machine ensures operator friendly working.



## Salient Features

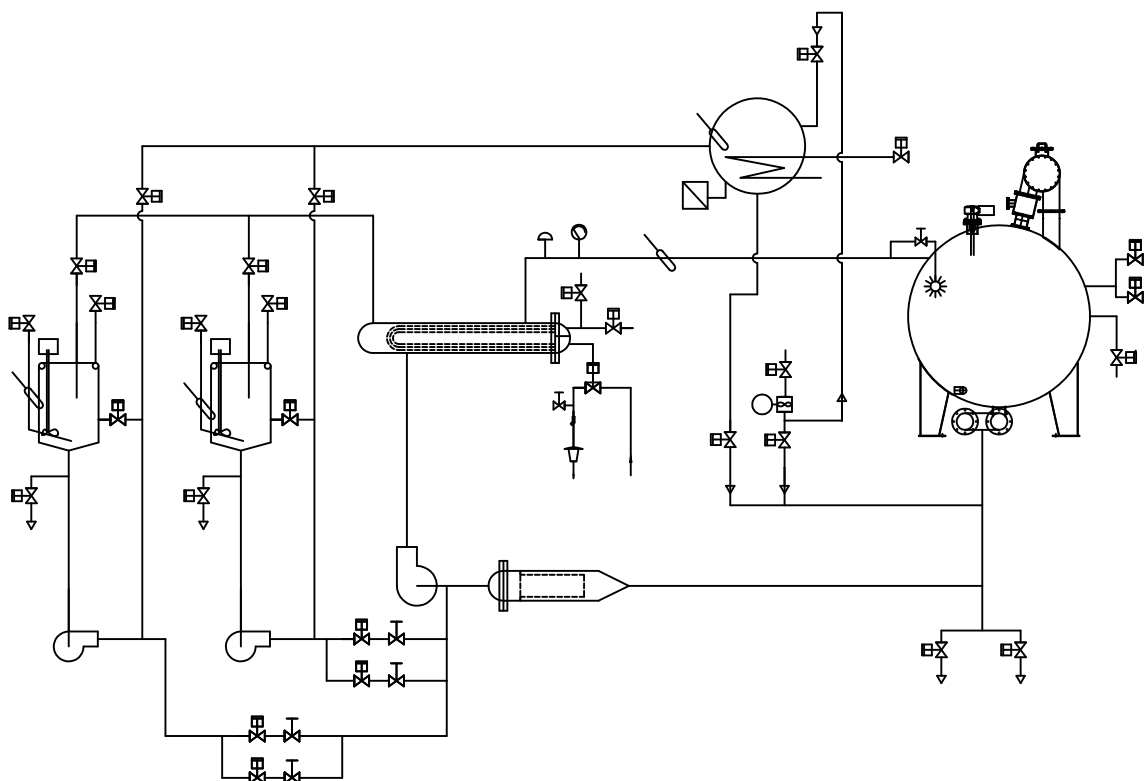
- Very Low liquor ratio 1:4 for cotton.
- Water consumption is much less than conventional machines, approx 30-40%.
- Less Batch time due to quick fill & drain, less fabric rotation time, fast heating & cooling of the system.
- Low power consumption due to efficient pump & piping design.
- Energy saving, due to low water amount.
- Practically entanglement free running, which enhances dyeing quality.
- Lowest cost per kg. of output.
- Eco Friendly due to lower effluent discharge.

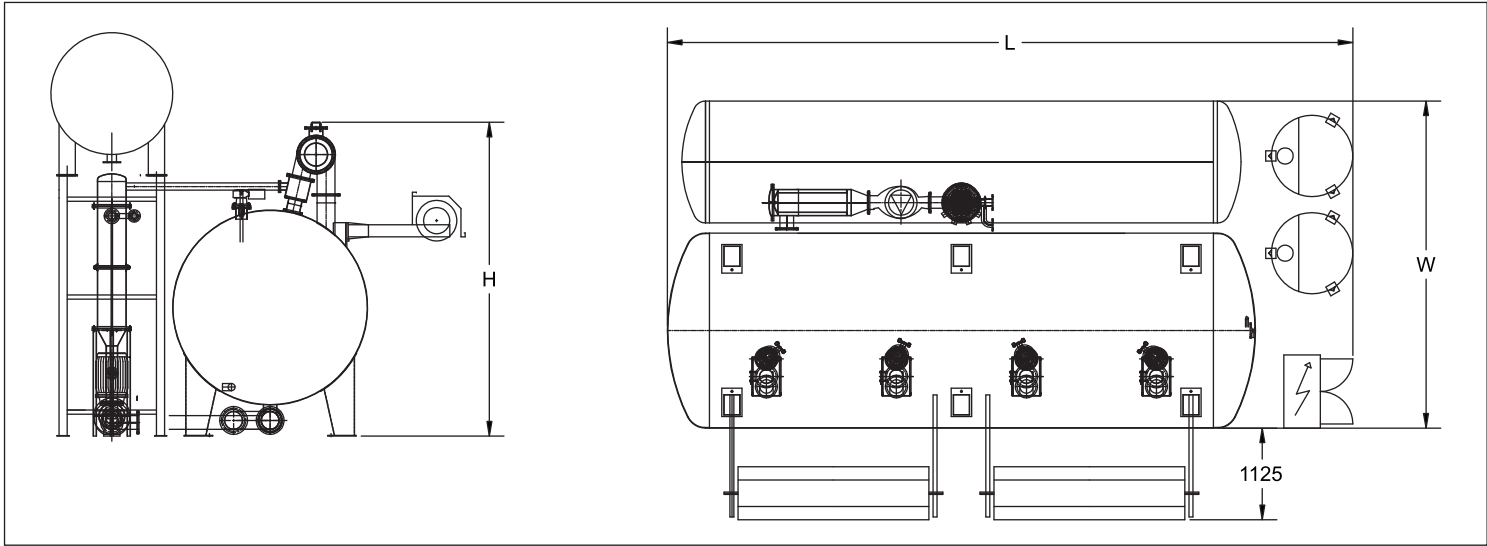
## Technical Data

- Maximum Working Temperature 135° C
- Maximum Working Pressure 3.2 Bar.
- Heating Rate : Approx. 4° C/Min upto 90° C & 3° C/Min upto 135° C at Steam Pressure of 6 Bar.
- Cooling Rate : Approx. 3° C/Min At Water Pressure of 4 Bar at 15° C.

## Technical Features

- Compact design, body manufactured out of heavy duty AISI 316L Stainless steel for all parts in contact with liquor.
- Heavy duty cast stainless steel circulation pump (low pressure high discharge) with mechanical seal to effect circulation and improve dyestuff fastness.
- Nozzle with variable gap adjustment to ensure right pressure on the fabric.
- Fabric plaiting device to assist better layout of fabric in the basket.
- Quick opening window with safety gadgets.
- PTFE sheet mounted inside to prevent any frictional damage.
- Frequently controlled AC drive for accurate speed variation of Lifter Reel.
- Machine can be equipped to suit requirement i.e. ranging from manual control to fully automatic control.
- All critical Bought outs from reputed manufacturers.
- Magnetic Level Indicator.
- High efficiency heat exchanger to ensure quick heating/cooling.
- High volume lint filter, particularly necessary in cotton and heavy GSM fabrics, for sampling process and indication of cycle time (option).
- Addition tank with mixer for proper mixing and dilution of chemicals and dye stuff.





### Sample dyeing machine

MODEL HTHP	NUMBERS OF ROPES	CAPACITY KGS (NOMINAL)	POWER KW	LENGTH MM	WIDTH MM	HEIGHT MM
CS 10 LLR	1	10	3.3	1500	2000	2000
CS 15 LLR	1	15	3.3	1500	2100	2000
CS 25 LLR	1	25	3.3	2500	2500	2500
CS 50 LLR	1	50	3.3	2500	2500	3000

### Fabric dyeing machine

MODEL HTHP	NUMBERS OF ROPES	CAPACITY KGS (NOMINAL)	POWER KW	LENGTH MM	WIDTH MM	HEIGHT MM
CS 1T 200	1	200	10	4000	4000	3800
CS 2T 200	2	400	18.95	6000	4000	3800
CS 3T 200	3	600	23.5	7600	4000	3800
CS 4T 200	4	800	29.5	8900	4000	4000
CS 6T 200	6	1200	48	10100	4000	4000
CS 8T 200	8	1600	60	11300	4000	4000
CS 1T 300	1	300	10	4300	4000	3800
CS 2T 300	2	600	18.95	6600	4000	3800
CS 3T 300	3	900	23.5	8500	4000	3800
CS 4T 300	4	1200	29.5	10400	4000	4000
CS 6T 300	6	1800	48	11900	4000	4000
CS 8T 300	8	2400	60	13500	4000	4000

For other models, sizes & ratings contact us.

The right to make design changes is reserved, the shown dimensions are indicative & non binding.

**EXOLLOYS**  
ENGINEERING PVT. LTD.  
(An ISO 9001:2008 Company)

Regd. Off. & Works : J-42, 'S' Block, MIDC. Bhosari, Pune - 411 026. INDIA  
Tel.: +91 - 20-27119087 Fax: +91 - 20-27127153  
E-mail : sales@exolloys.com Website : [www.exolloys.com](http://www.exolloys.com)

Represented By :

Subject to design modification as a result of technical progress.